



Böcker Aluminium Trailer Cranes



Böcker Aluminium Trailer Cranes

Cost-effective, efficient and flexible

The trailer cranes are an economically interesting alternative to the well proven Böcker truck mounted cranes. Fitted onto a tandem chassis these cranes, depending upon the type, are able to handle payloads of 800 kg up to 1,500 kg at lengths of 25 m up to 31. Being equipped with an overrun brake the chassis is characterized by excellent riding performance. The optionally available automotive drive enables handling without towing vehicle at the place of use.

The high-performance and easy to maintain petrol or diesel engine enables maximum turning, telescoping and hook speeds at less fuel consumption and minimum maintenance efforts. The drive motor can easily be started respectively stopped by means of the serial radio remote control unit.

Variability

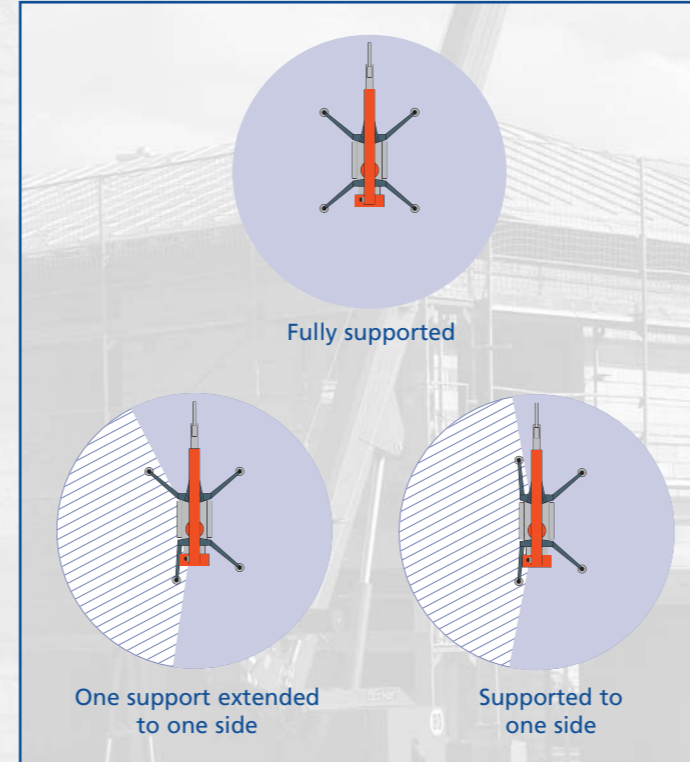
- Various applications due to mechanically one or two-fold extendable jib
- Alteration from crane to work platform (AHK 31/1500 only) by few hand movements
- Working cage optionally hydraulically pivotable to the left and to the right
- Power supply to the cage by means of the crane electrics, thus no need for a separate motor
- A form-closed hydraulic automotive drive on the axle ensures perfect shunting performance without towing vehicle even under most difficult construction site conditions
- Comprehensive accessories available such as tipping troughs, tile grabs, pallet forks, roof racks etc.

Sturdy Aluminium Mast System

- Closed high-strength special alloy aluminium tube profiles ensure less deflection even at high loads
- Seamless profiles guarantee maximum longevity
- All functions of the mast to be securely operated by means of the sensitive proportional control under load
- Mast can as well be extended respectively retracted under load in horizontal position
- Telescoping of the mast by means of hydraulic cylinder and chains
- Large range even up to the rear side of the roof

State-Of-The-Art PLC Control

- Depending upon the load and the position of the supports the intelligent control automatically calculates the maximum range
- Up to four crane functions can be controlled simultaneously
- The variable and hydraulic support control in connection with the electronic swivel range control enables the use even under extreme narrow site conditions
- A modern DECT radio control ensures supreme comfort and efficient work at maximum safety
- Continuous control of all electric components by modern CAN-Bus-Technology
- The serial slack rope device and rope layer control guarantee trouble-free working condition



Height adjustable towing device



Support planks with holder



Efficient automotive drive

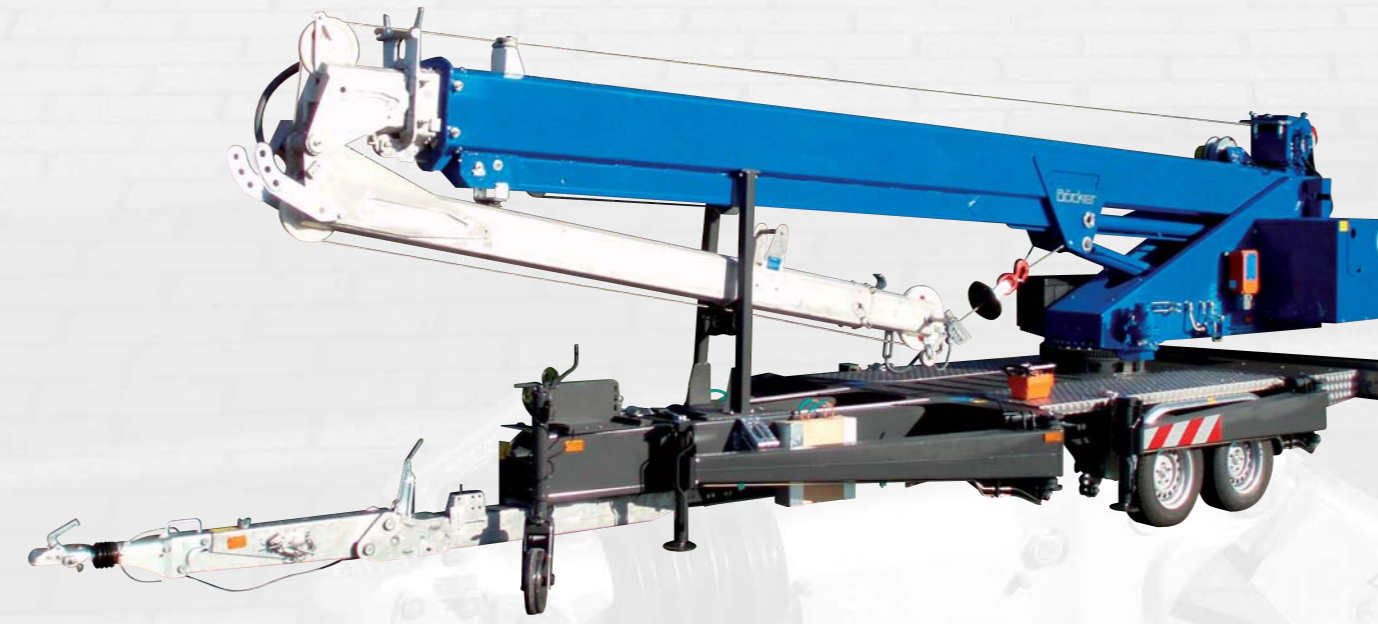


Sturdy support wheel

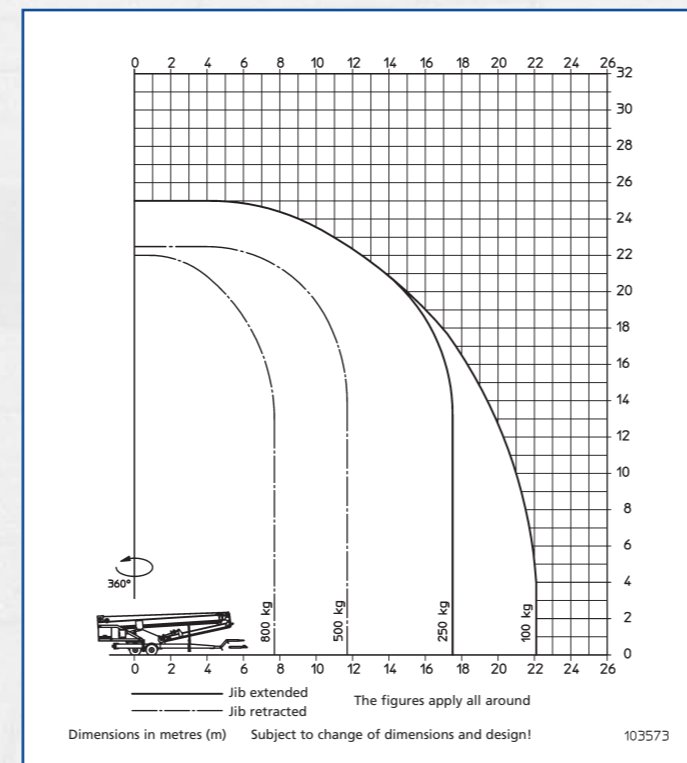




Aluminium Trailer Crane AHK 25 / 800 PLC



Working Diagram



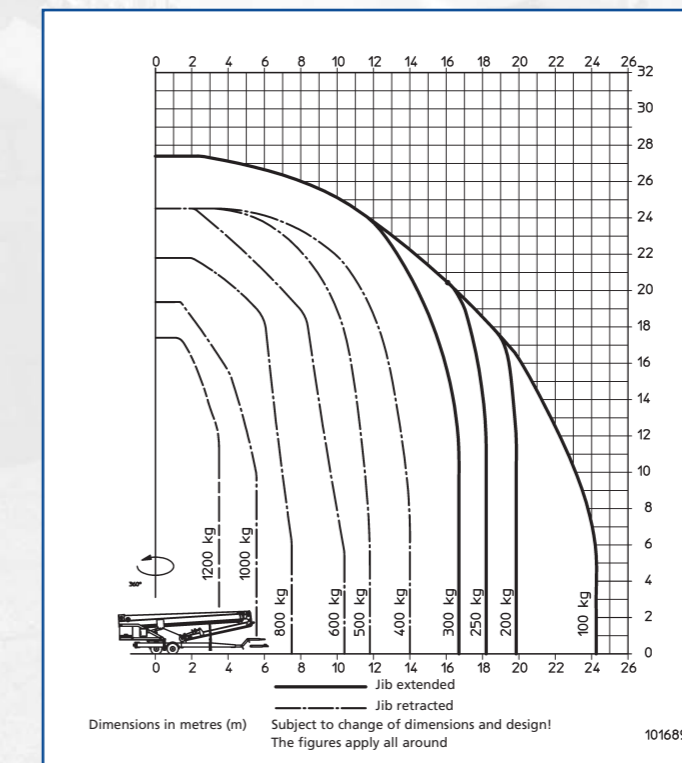
Technical Data

Payload max.	800 kg
Extension length max.	25.00 m
Working height up to jib	20.00 m
Jib extendable	3.85 m up to 6.00 m
Angle of telescope arm	85 degrees
Angle of jib approx.	mechanically 135/150/165 degrees
Hook speed approx.	45 m/min
Bilateral support approx. L x W	5.20 m x 5.20 m
Support to one side max. L x W	6.80 m x 3.65 m
Vehicle dimensions L x W x H	8.50 m x 2.25 m x 2.45 m
Admissible total weight	2,700 kg

Aluminium Trailer Crane AHK 27 / 1200 PLC



Working Diagram



Technical Data

Payload max.	1,200 kg
Extension length max.	27.00 m
Working height up to jib	22.00 m
Jib extendable	4.50 m up to 7.00 m
Angle of telescope arm	85 degrees
Angle of jib approx.	mechanically 135/150/165 degrees
Hook speed approx.	40 m/min
Bilateral support approx. L x W	5.00 m x 5.00 m
Support to one side max. L x W	6.70 m x 3.60 m
Vehicle dimensions L x W x H	9.00 m x 2.20 m x 2.60 m
Admissible total weight	3,500 kg

Aluminium Trailer Crane AHK 30 / 1400 PLC

Aluminium Trailer Crane AHK 31 / 1500 PLC

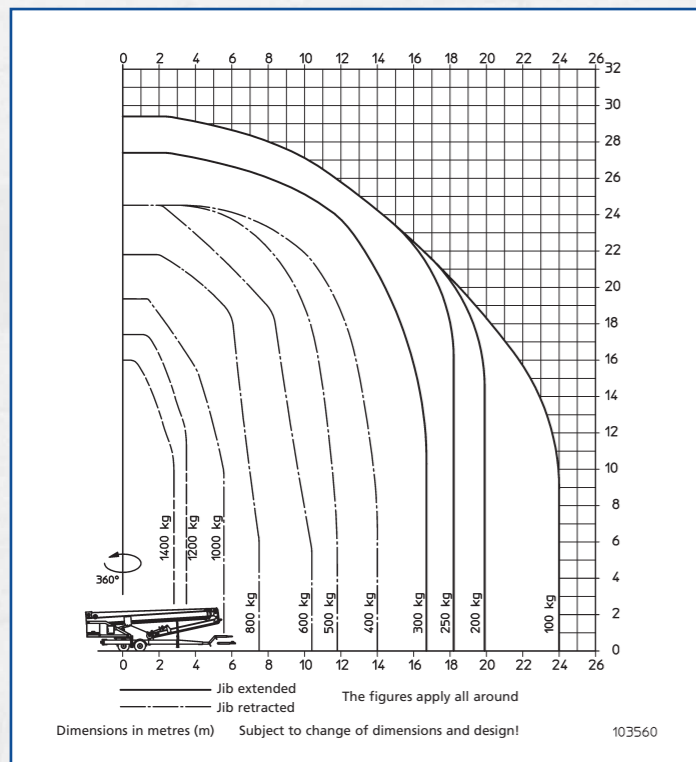


Working Diagram

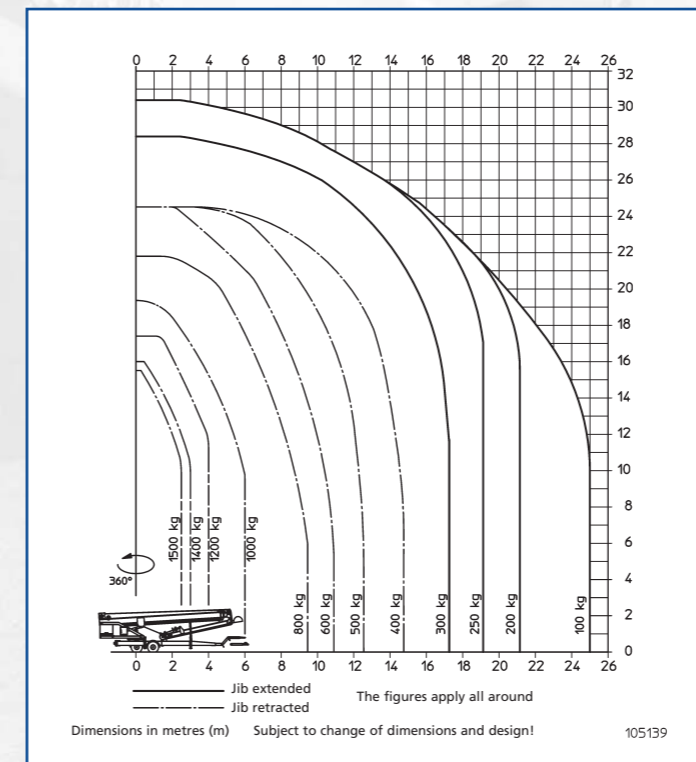
Technical Data

Working Diagram

Technical Data



Payload max.	1,400 kg
Extension length max.	30.00 m
Working height up to jib	22.00 m
Jib extendable	4.75 m up to 9.00 m
Angle of telescope arm	85 degrees
Angle of jib approx.	mechanically 135/150/165 degrees
Hook speed approx.	55 m/min
Bilateral support approx. L x W	5.00 x 5.00 m
Support to one side max. L x W	6.70 x 3.60 m
Vehicle dimensions L x W x H	9.00 m x 2.20 m x 2.60 m
Admissible total weight	3,500 kg



Payload max.	1,500 kg
Extension length max.	31.00 m
Working height up to jib	23.00 m
Jib extendable	4.75 m up to 9.00 m
Angle of telescope arm	85 degrees
Angle of jib approx.	hydraulically 0 up to 165 degrees
Hook speed approx.	60 m/min
Bilateral support approx. L x W	5.4 m x 5.4 m
Support to one side max. L x W	7.3 m x 3.75 m
Vehicle dimensions L x W x H	9.10 m x 2.30 m x 2.92 m
Admissible total weight	3,500 kg
Working height with platform max.	22.5 m
Lateral range with platform max.	12.0 m at 250 kg 15.0 m at 150 kg



 **Böcker**
Kran- und Aufzugstechnik

Albert Böcker GmbH & Co. KG
Lippestraße 69 · D-59368 Werne
Phone +49 23 89/79 89-0
Fax +49 23 89/53 22 04
www.boecker.de

Albert Böcker GmbH & Co. KG
is a specialist of the Böcker AG.

Böcker – The Lifting Group

